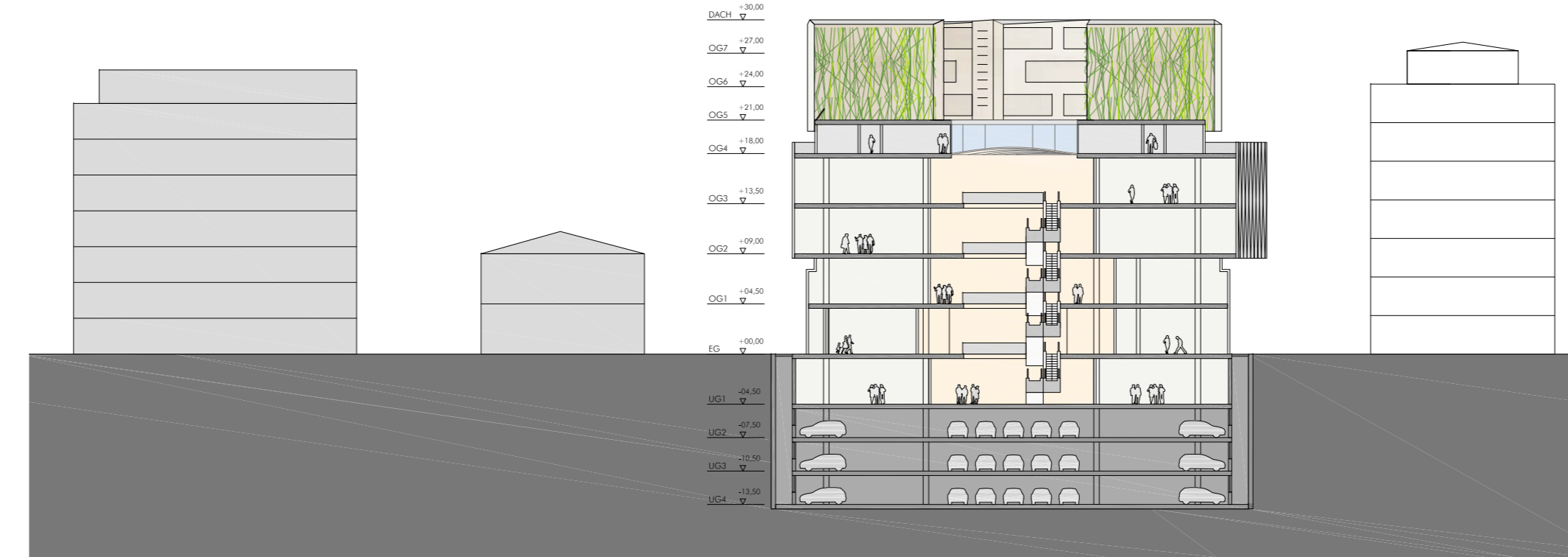
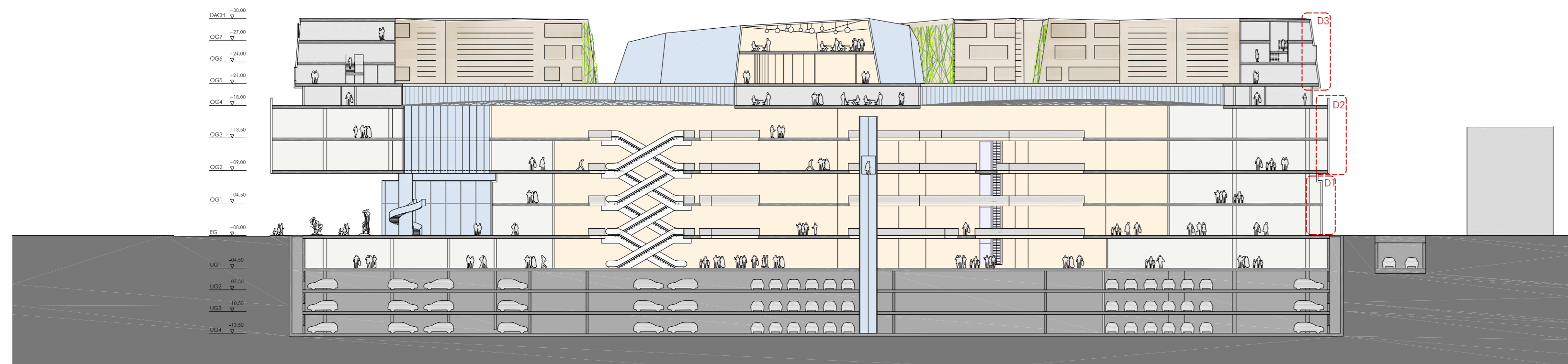


Schnitt CC  
Sezione CC

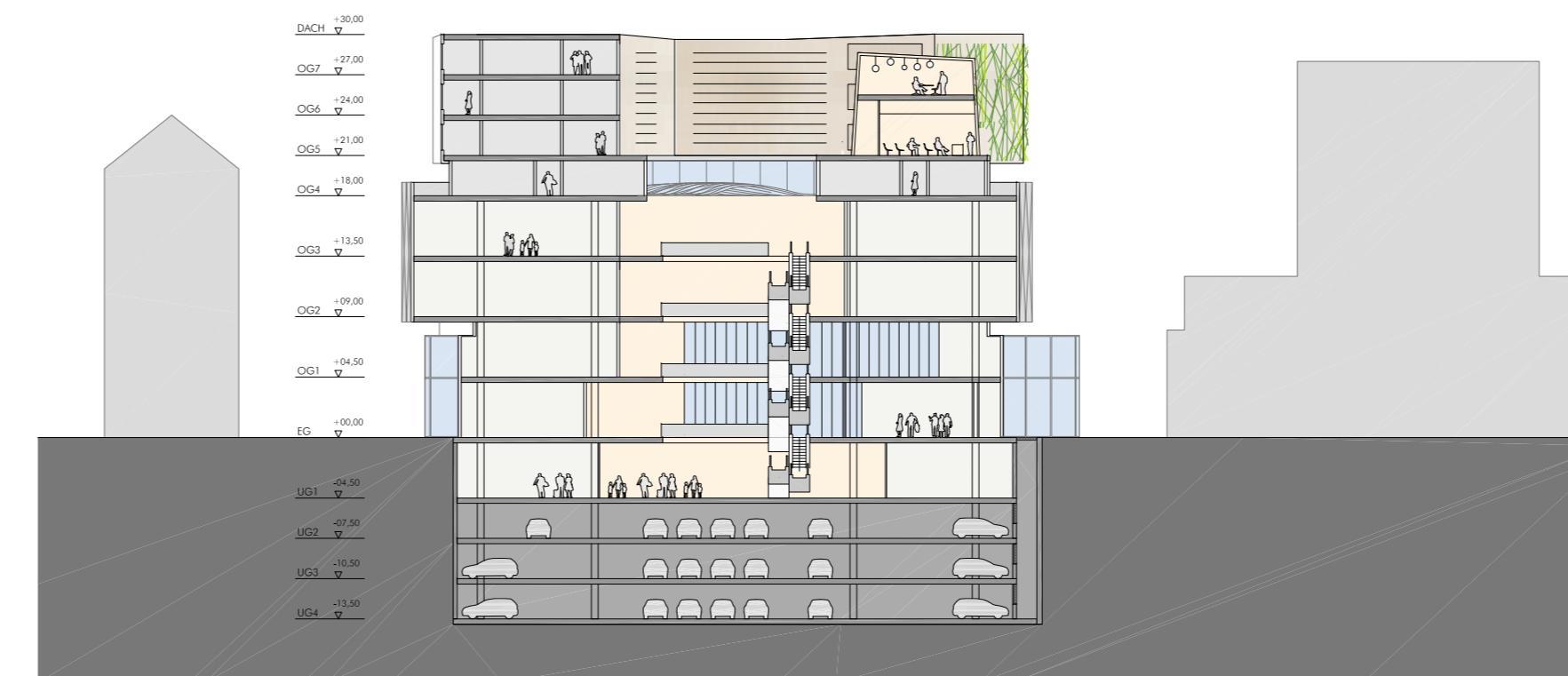


Schnitt BB  
Sezione BB

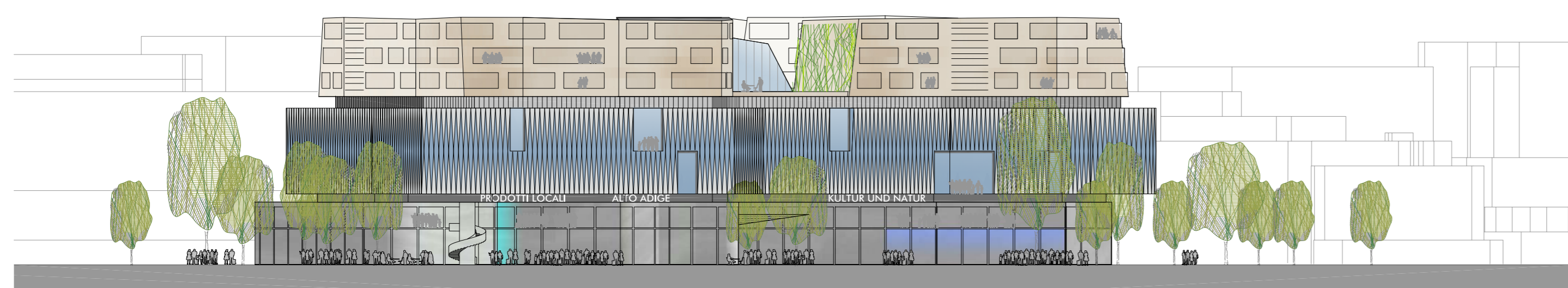
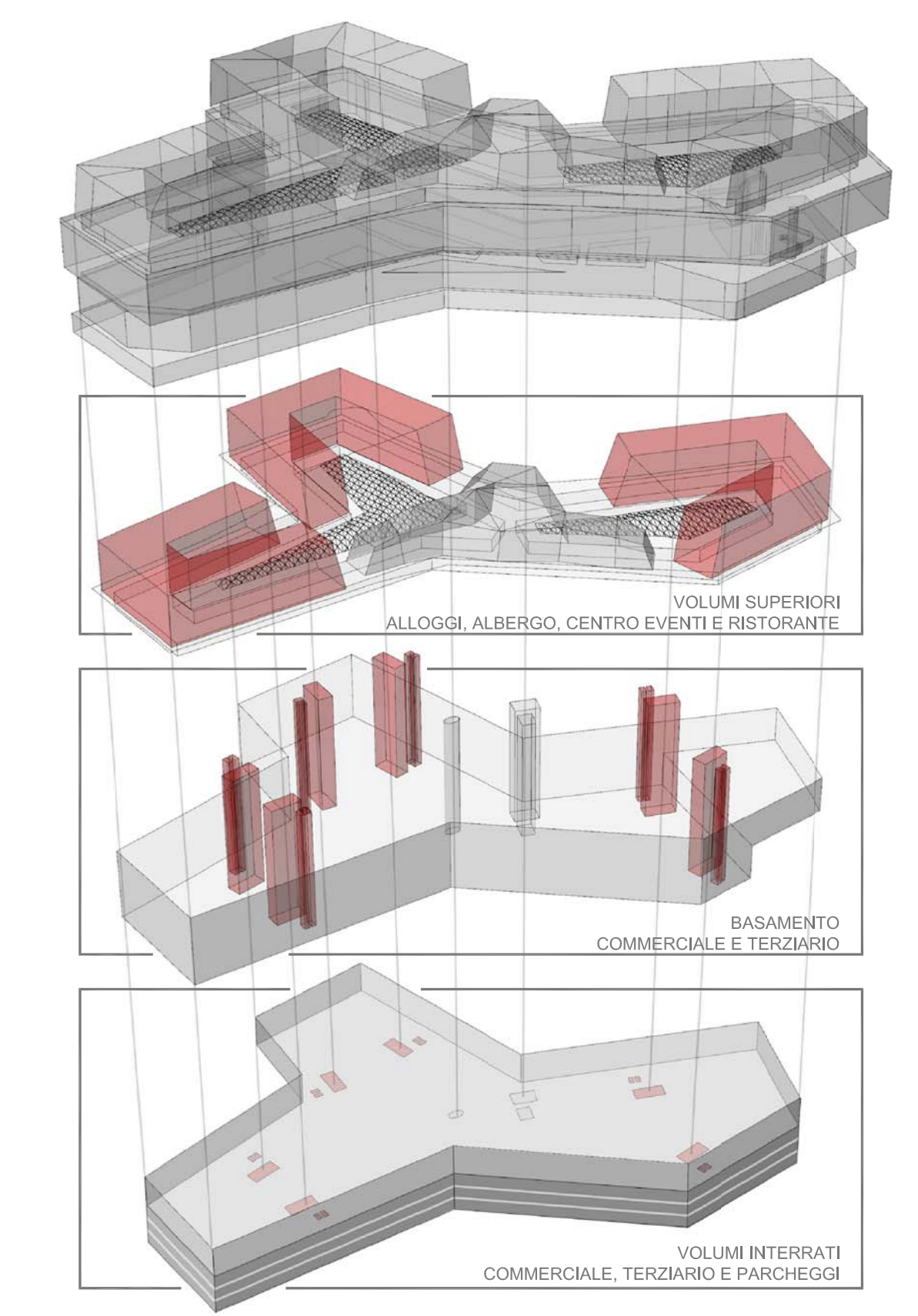
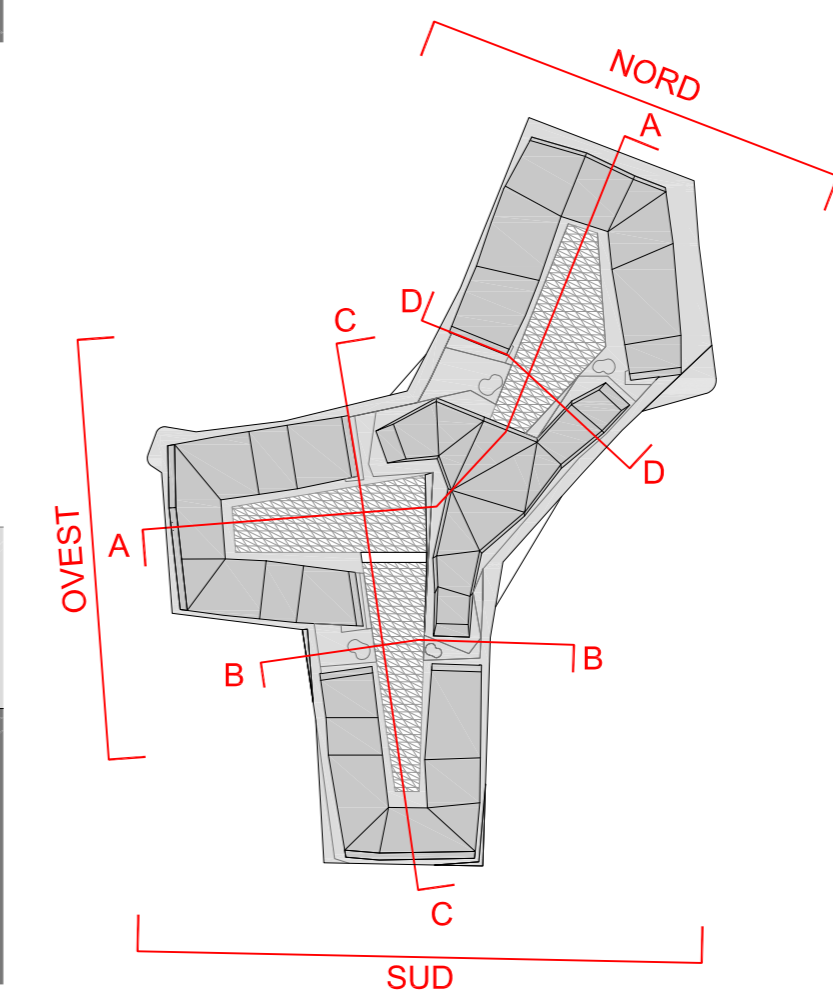
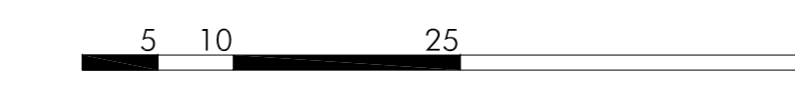
- HANDEL COMMERCIALE
- GALERIA
- HOTEL-WOHNEN HOTEL-ALLOGGI
- PARKEN
- PARCHEGGIO



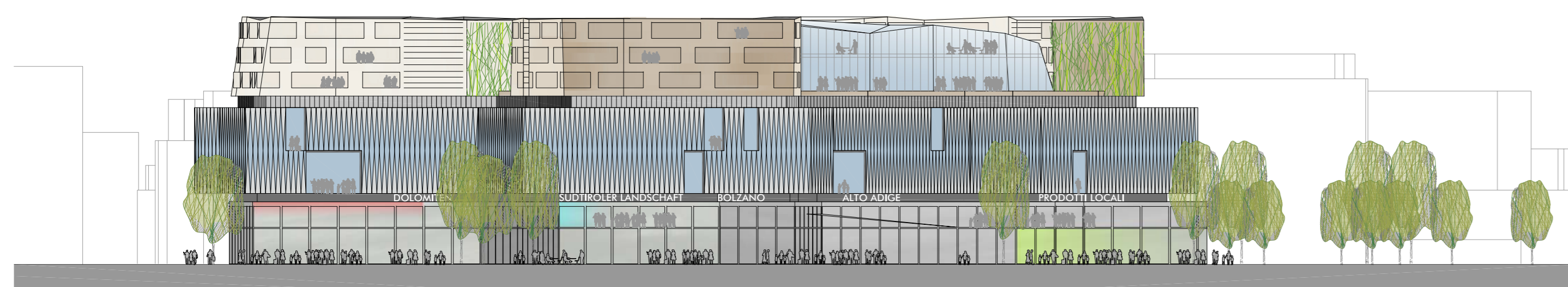
Schnitt AA  
Sezione AA



Schnitt DD  
Sezione DD



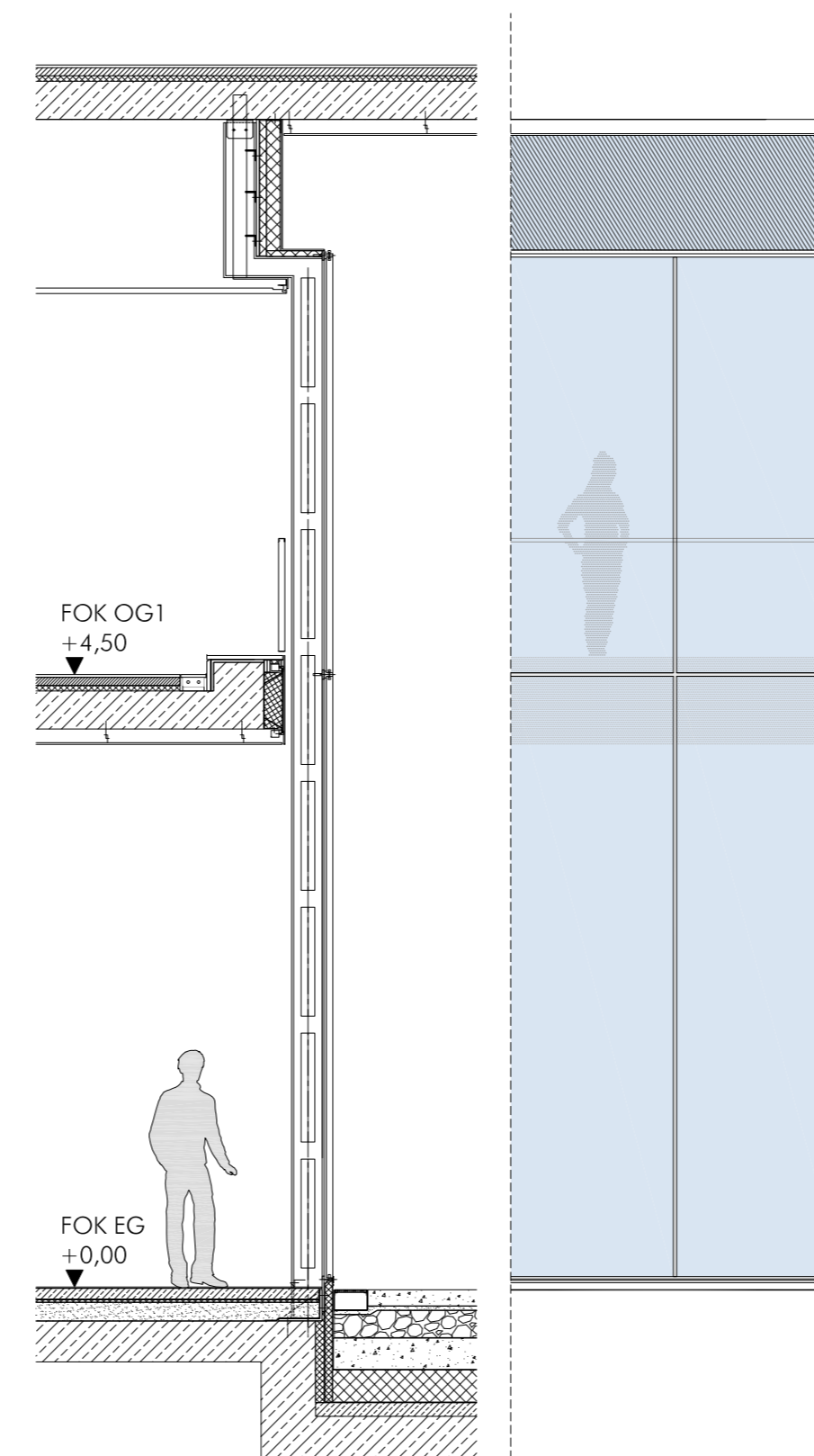
Ansicht Nord  
Prospetto Nord



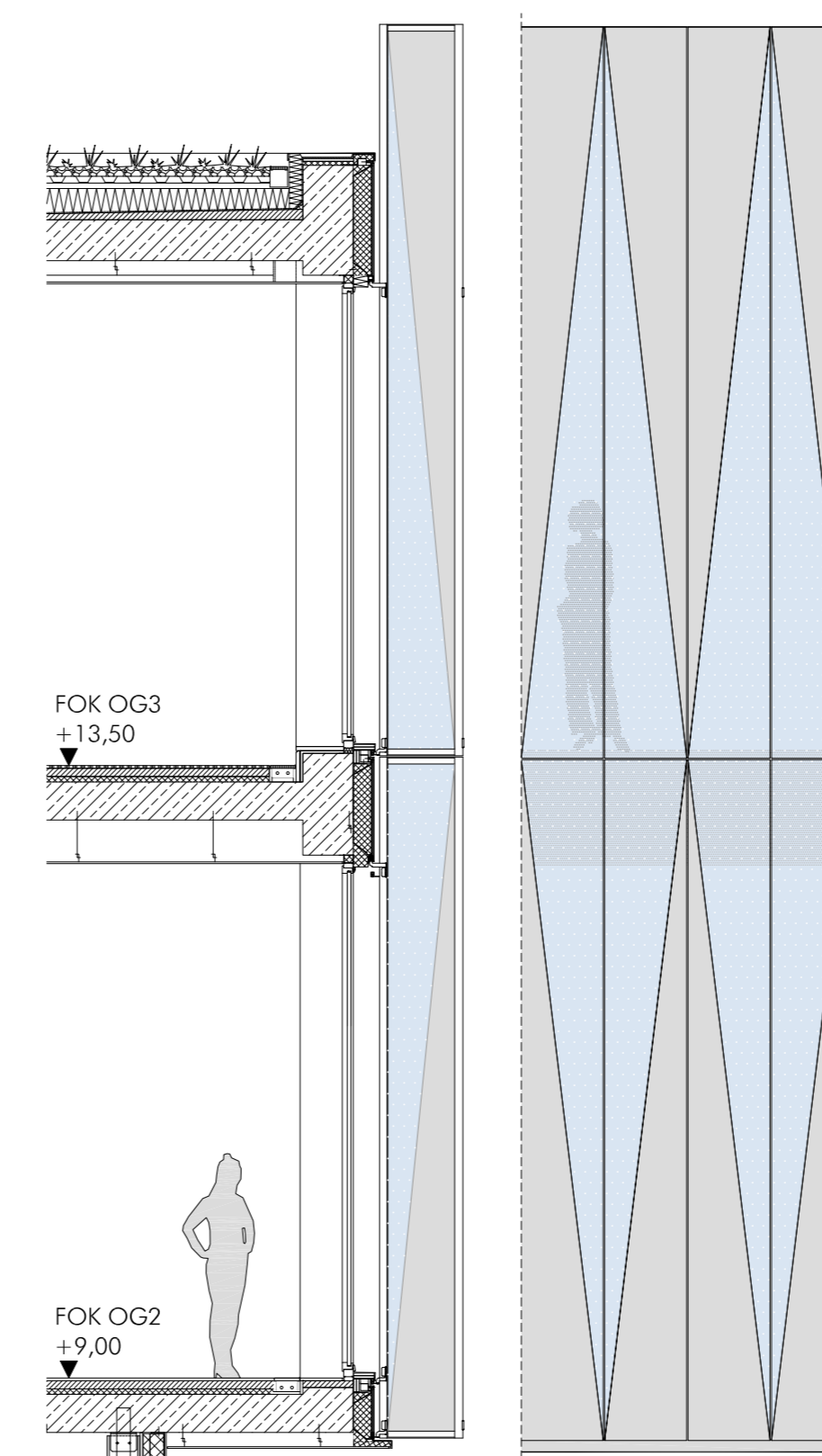
Ansicht Süd  
Prospetto Sud



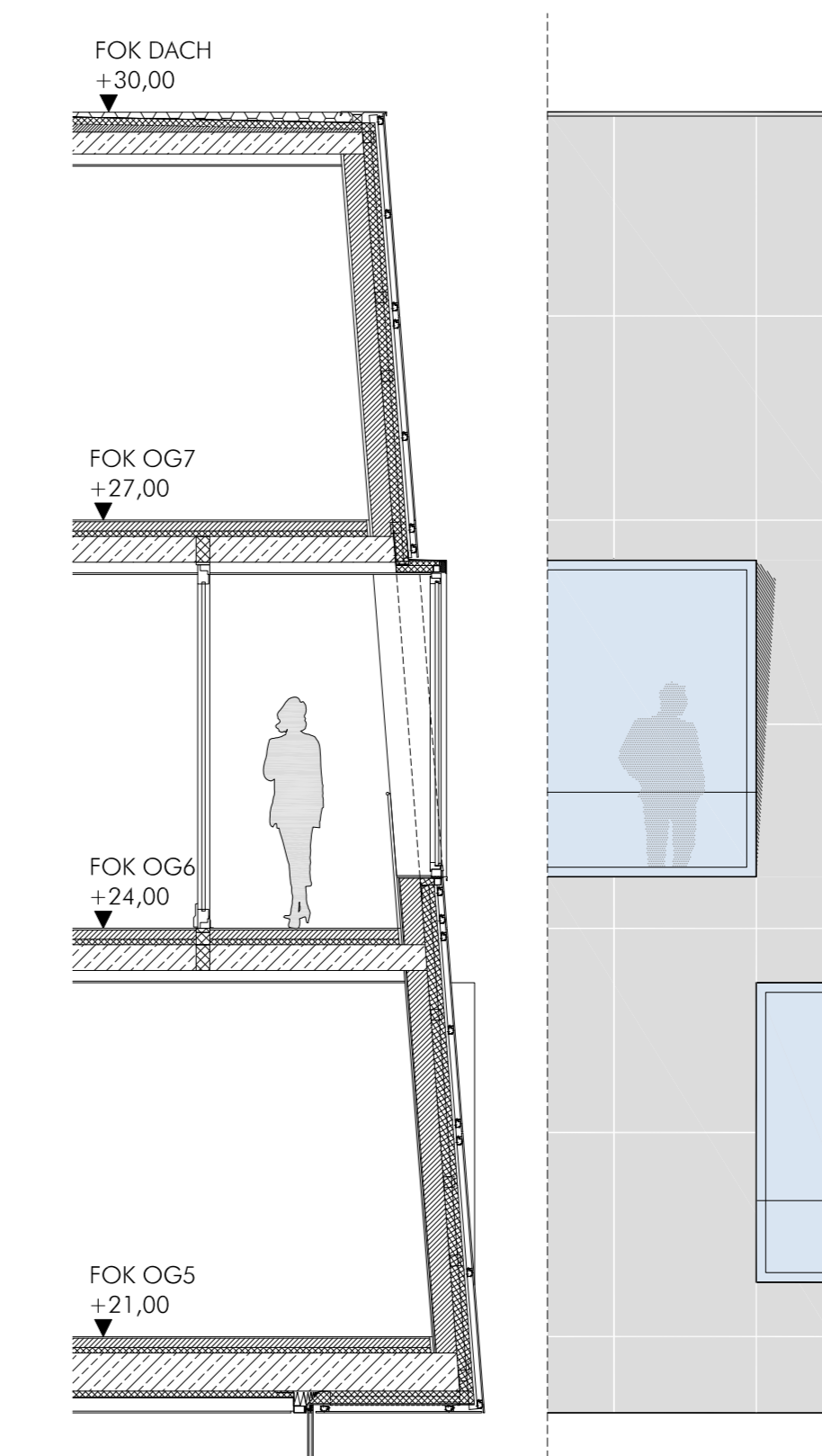
Ansicht West  
Prospetto Ovest



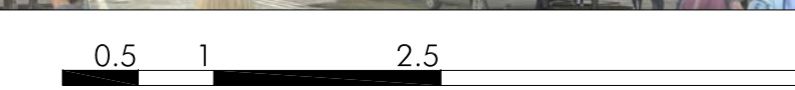
Detail 1 - Glass  
Dettaglio 1 - Vetro



Detail 2 - Metall und Glass  
Dettaglio 2 - Metallo e Vetro



Detail 3 - Putz oder Keramik  
Dettaglio 3 - Intonaco o Ceramica



PROGETTO ARCHITETTONICO URBANISTICO  
**BORIS PODRECCA ARCHITECTEN**  
 Jögerbadgasse 8 1170 Wien  
 Tel +43 (1) 42 721-0 Fax +43 (1) 42 721-20  
 boris.podrecca@podrecca.at

PLANINHALT / CONTENUTO  
 ANSICHTEN - SCHNITTE - LEITDETAILS  
 PROSPETTI - SEZIONI - DETTAGLI TIPO  
 MASZSTAB / SCALA 1:500 - 1:50 DATUM / DATA 08/08/2014

ERLEBNISHAUS SÜDTIROL  
 Emozioni Alto Adige

PLAN NR. / TAVOLA N. **2.C**  
 QUALITÀ ARCHITETTONICA **Cap. III**

PIANO DI RIQUALIFICAZIONE URBANISTICA NEL COMPARTO VIA ALTO ADIGE, PERATHONER, STAZIONE E GARIBALDI AI SENSI DELL'ART. 55/QUINQUIES DELLA L.P. N. 13/1997 E SS.MM.