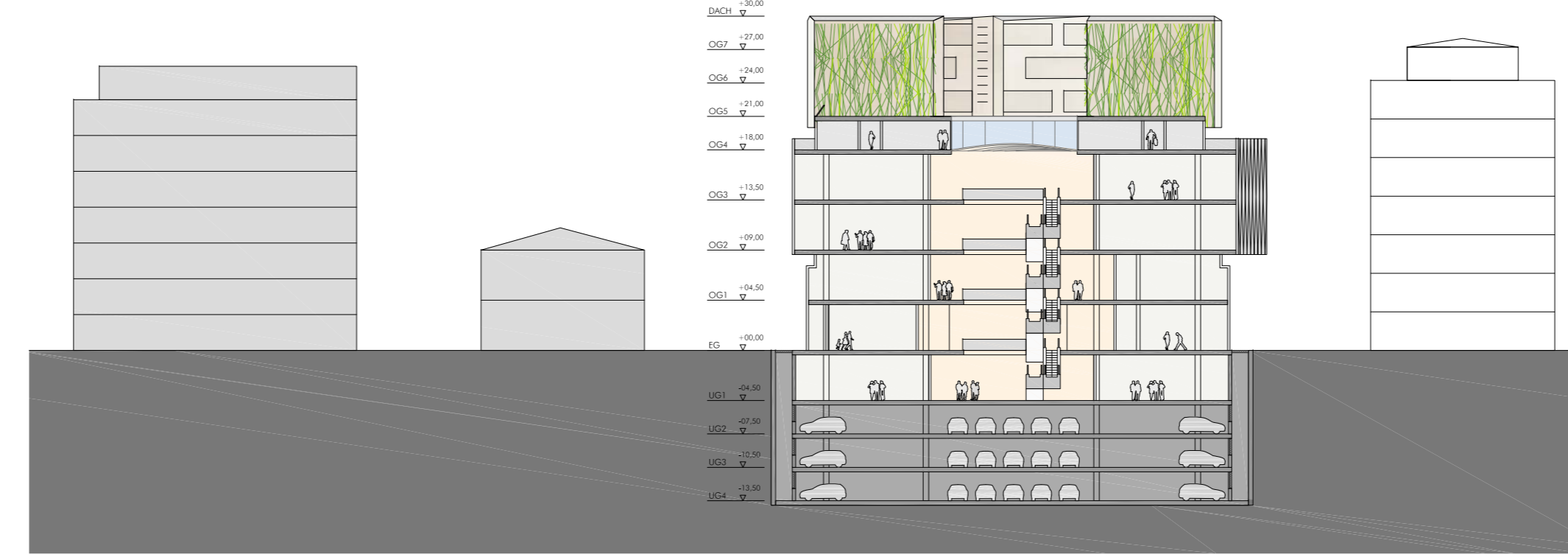
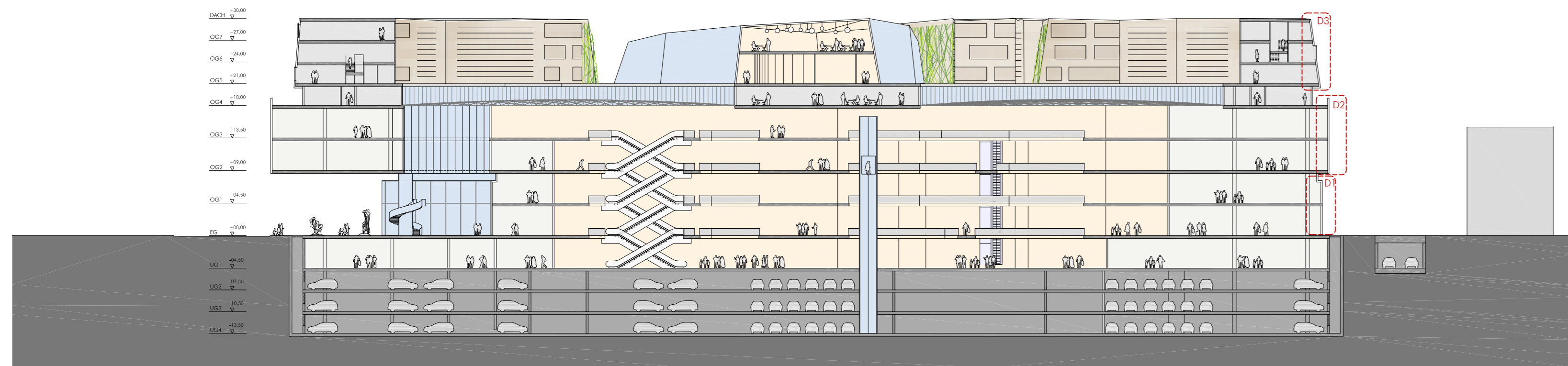


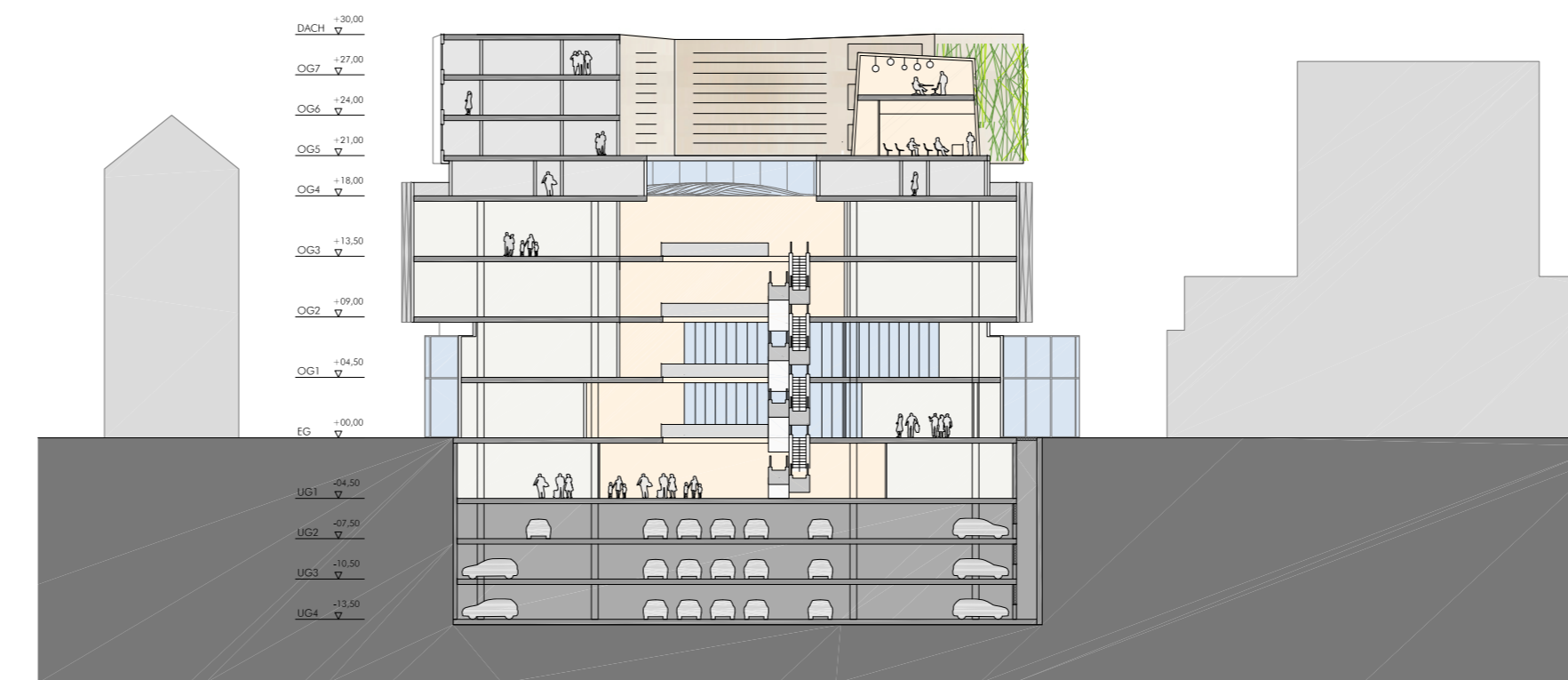
Schnitt CC
Sezione CC



Schnitt BB
Sezione BB

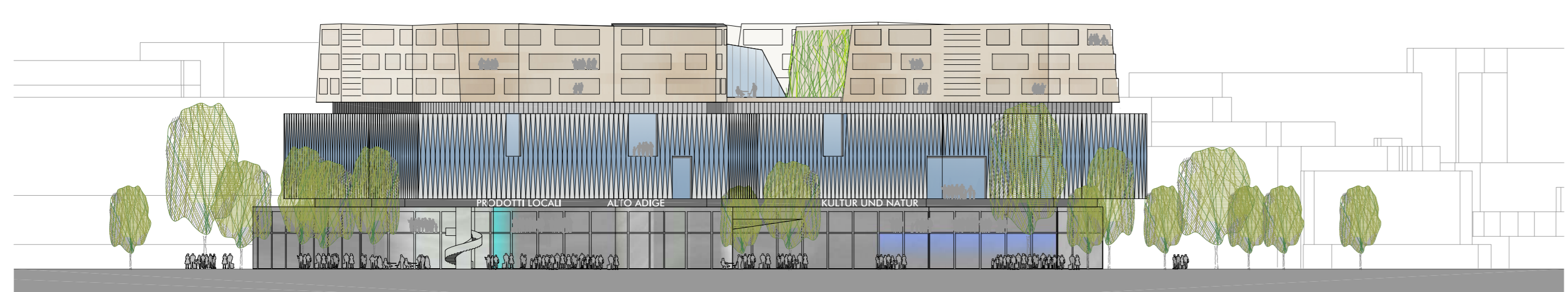
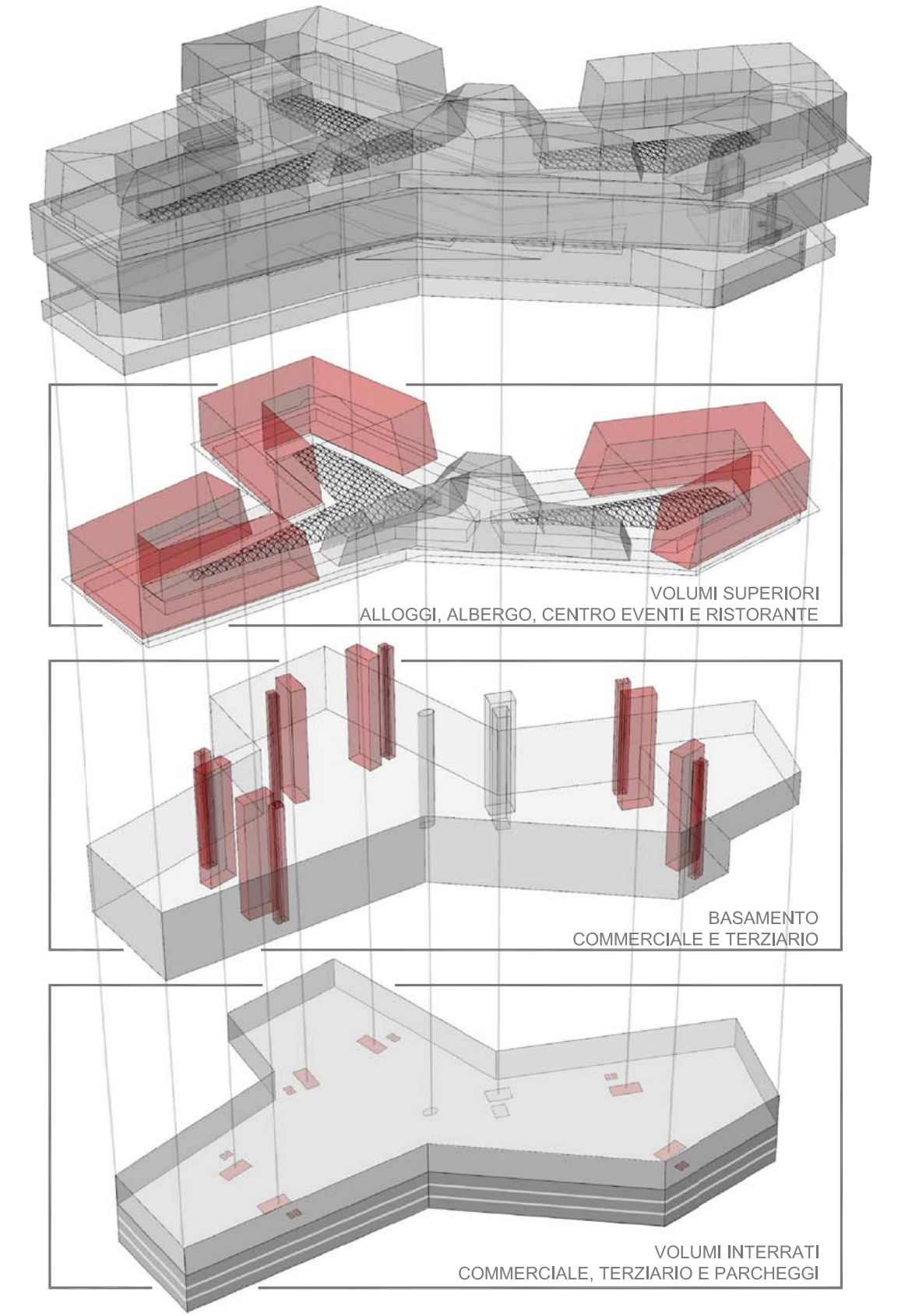
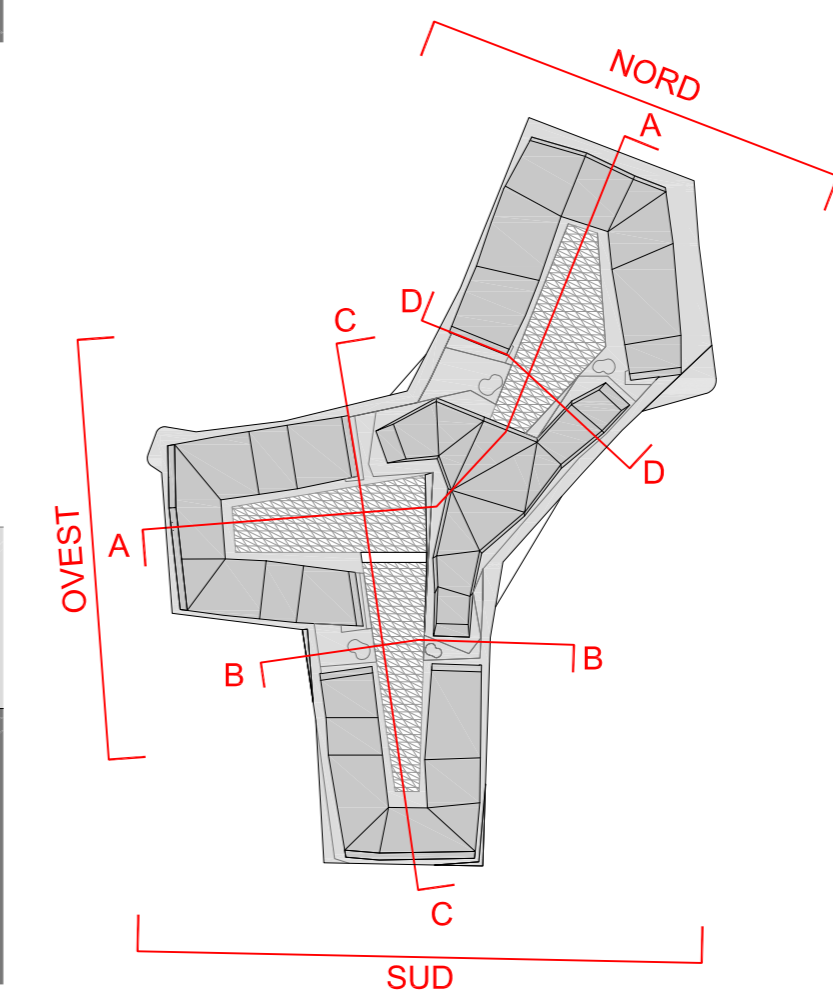


Schnitt AA
Sezione AA

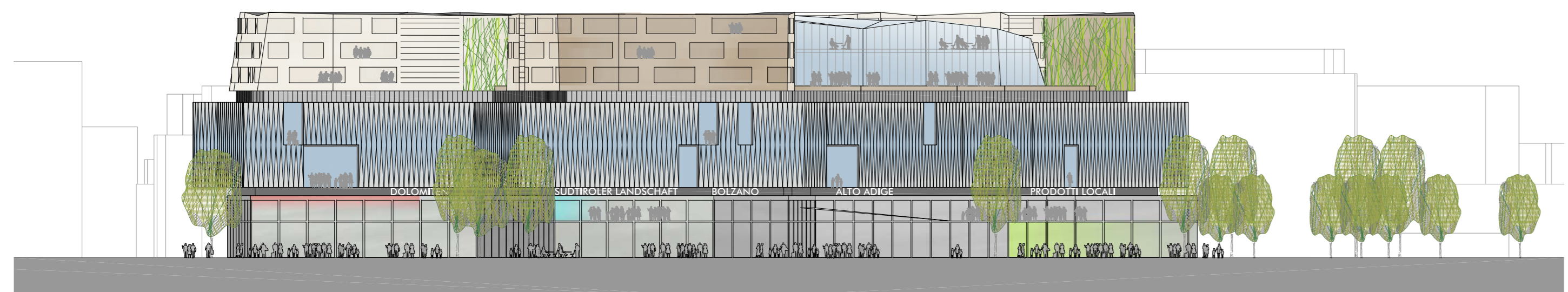


Schnitt DD
Sezione DD

- HANDEL COMMERCIALE
- GALERIA
- HOTEL-WOHNEN HOTEL-ALLOGGI
- PARKEN PARCHEGGIO



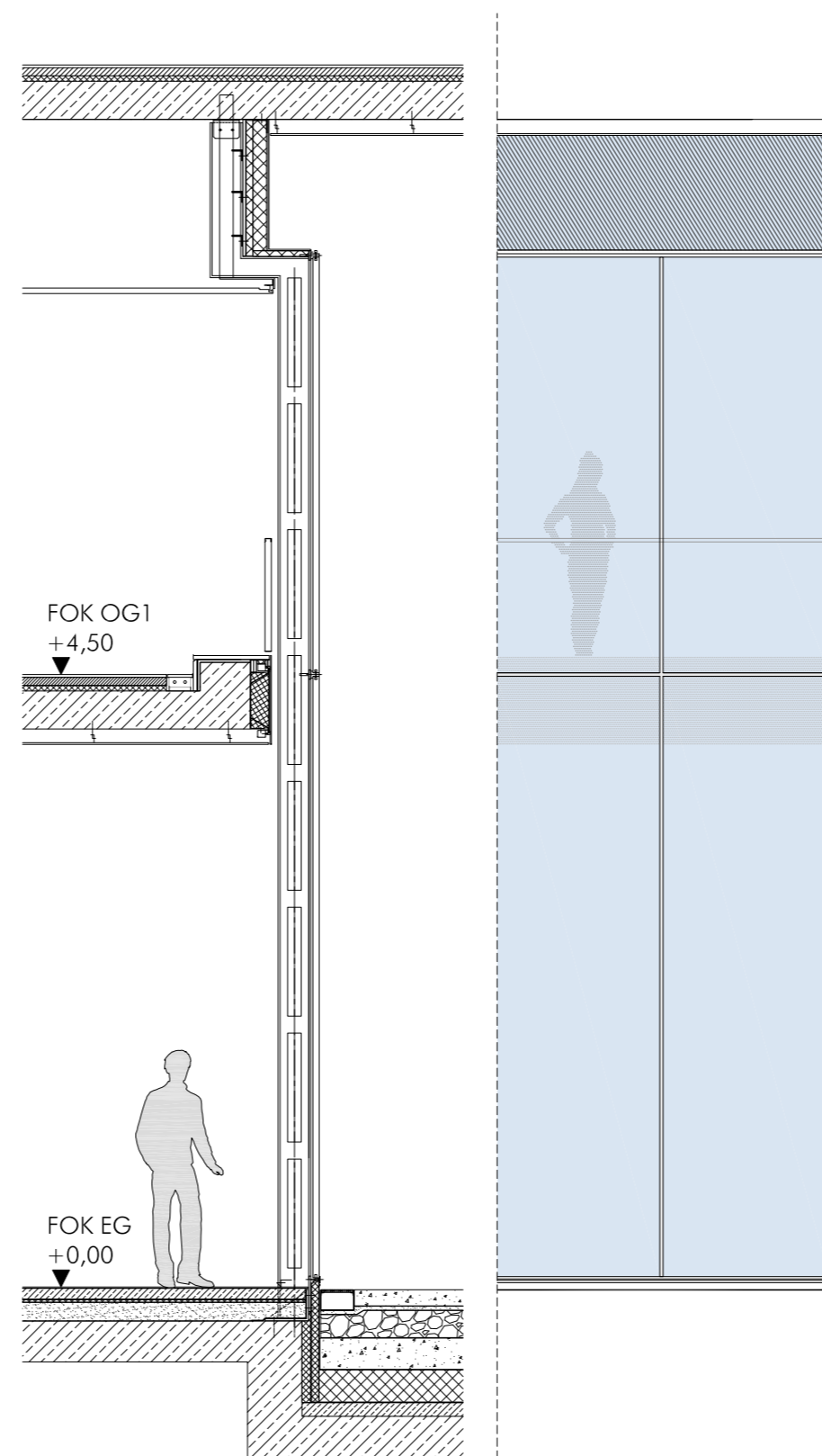
Ansicht Nord
Prospetto Nord



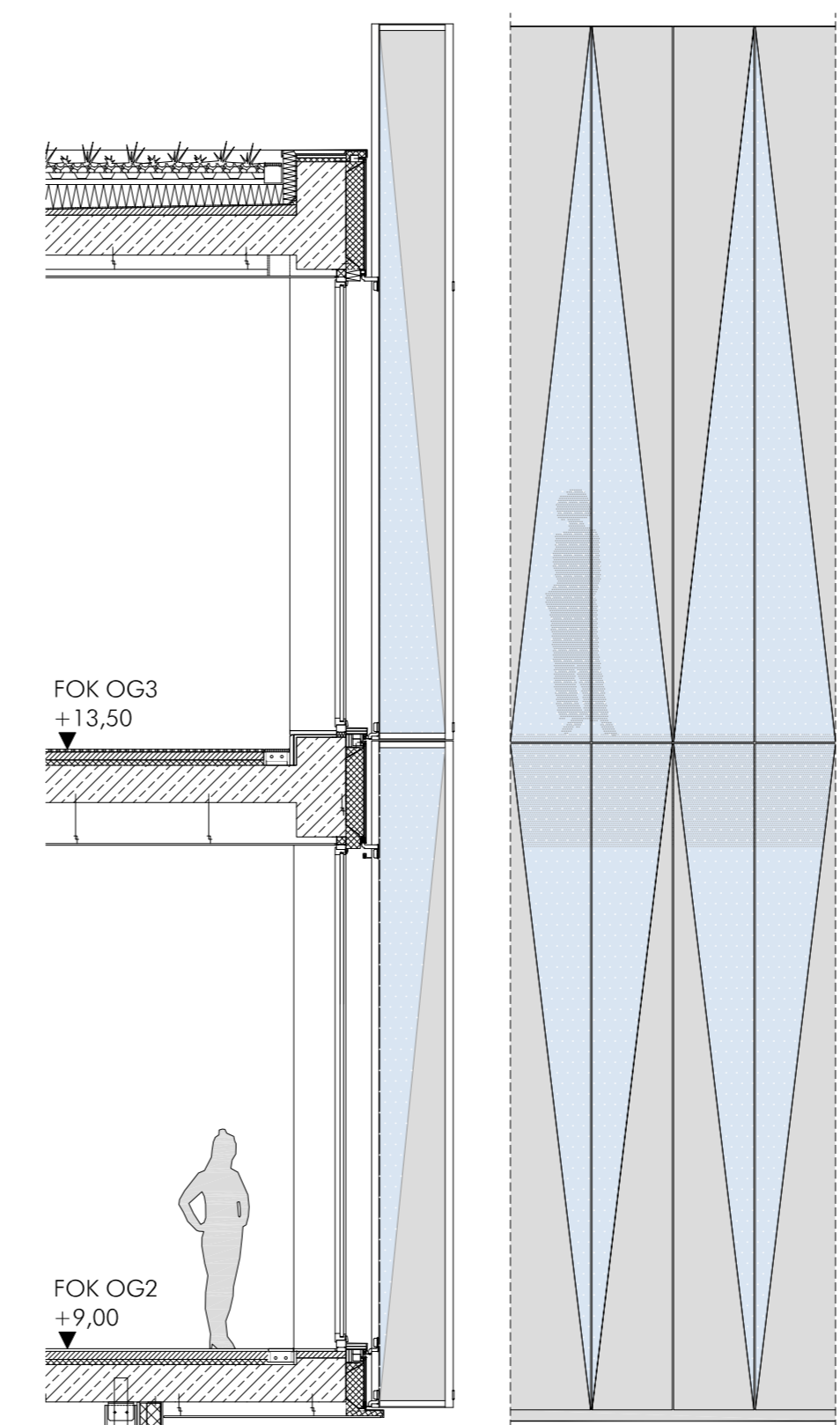
Ansicht Süd
Prospetto Sud



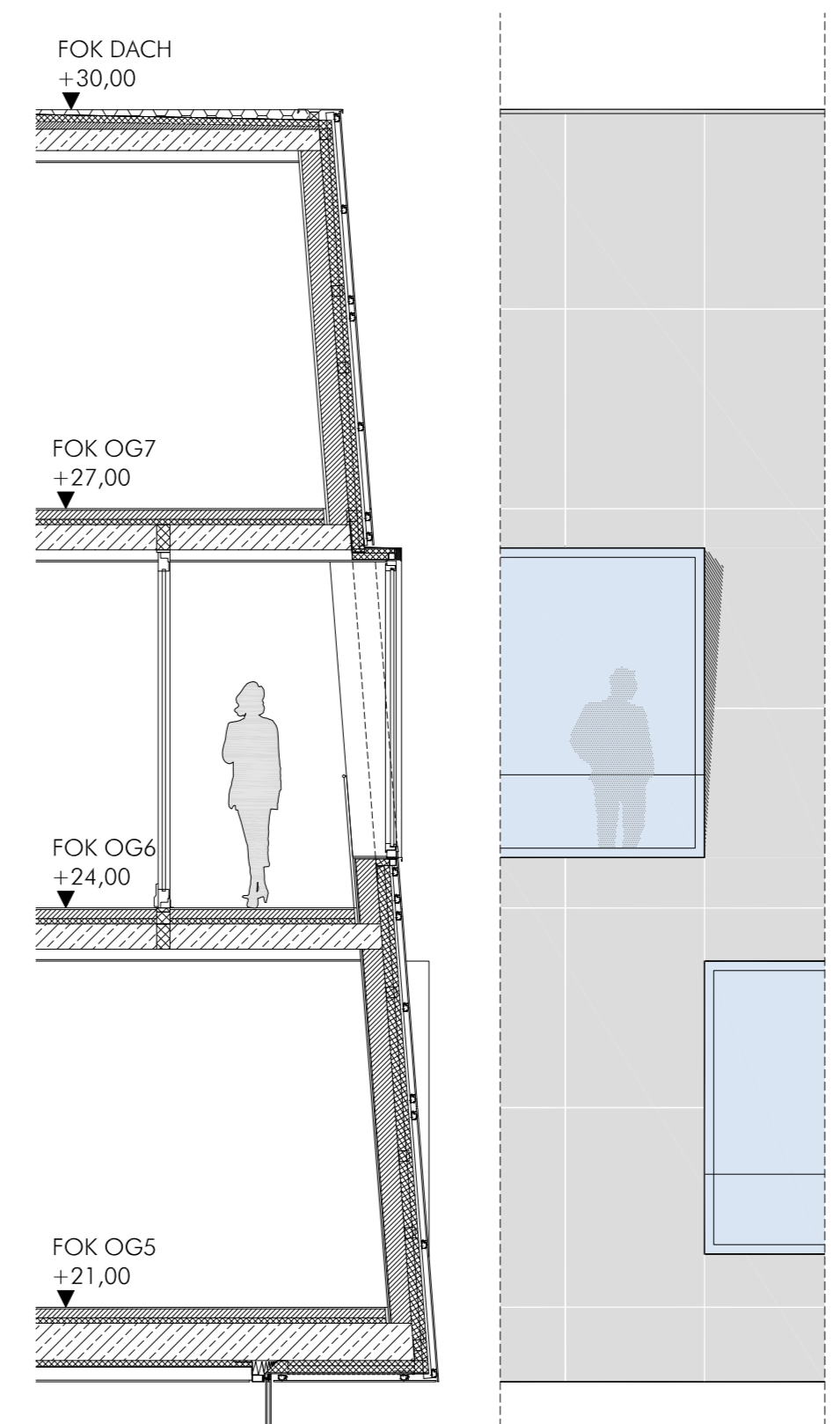
Ansicht West
Prospetto Ovest



Detail 1 - Glass
Dettaglio 1 - Vetro



Detail 2 - Metall und Glass
Dettaglio 2 - Metallo e Vetro



Detail 3 - Putz oder Keramik
Dettaglio 3 - Intonaco o Ceramica



PROGETTO ARCHITETTONICO URBANISTICO
BORIS PODRECCA ARCHITECTEN
 Jägerbadgasse 8 1170 Wien
 Tel +43 (1) 42 721-0 Fax +43 (1) 42 721-20
 boris.podrecca@podrecca.at

PLANINHALT / CONTENUTO
 GESTALTUNGSPLAN 5 - ANSICHTEN - SCHNITTE - LEITDETAILS
 PIANO INDICATIVO 5 - PROSPETTI - SEZIONI - DETTAGLI TIPO
 MASZSTAB / SCALA 1:500 - 1:50 DATUM / DATA 08/08/2014