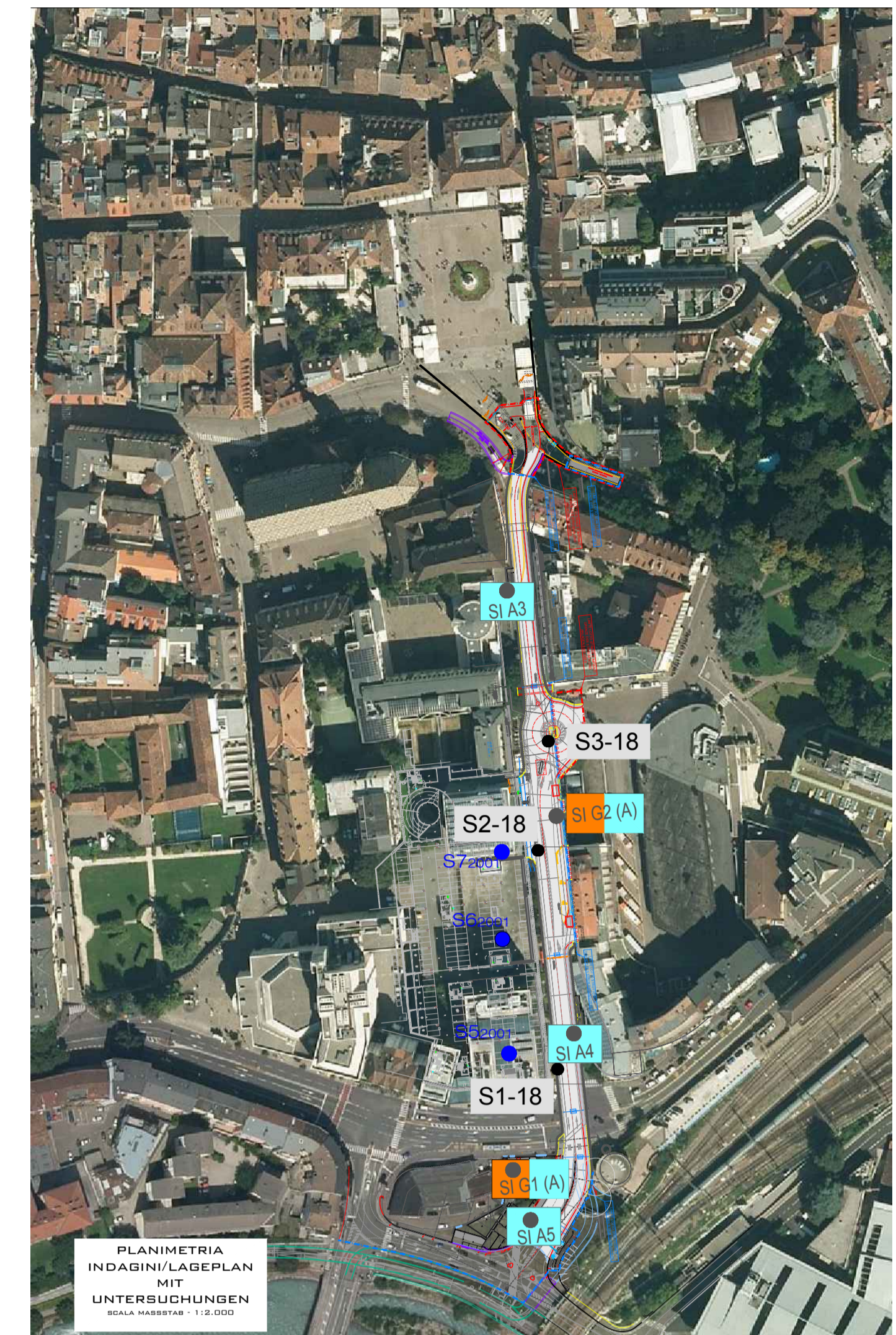
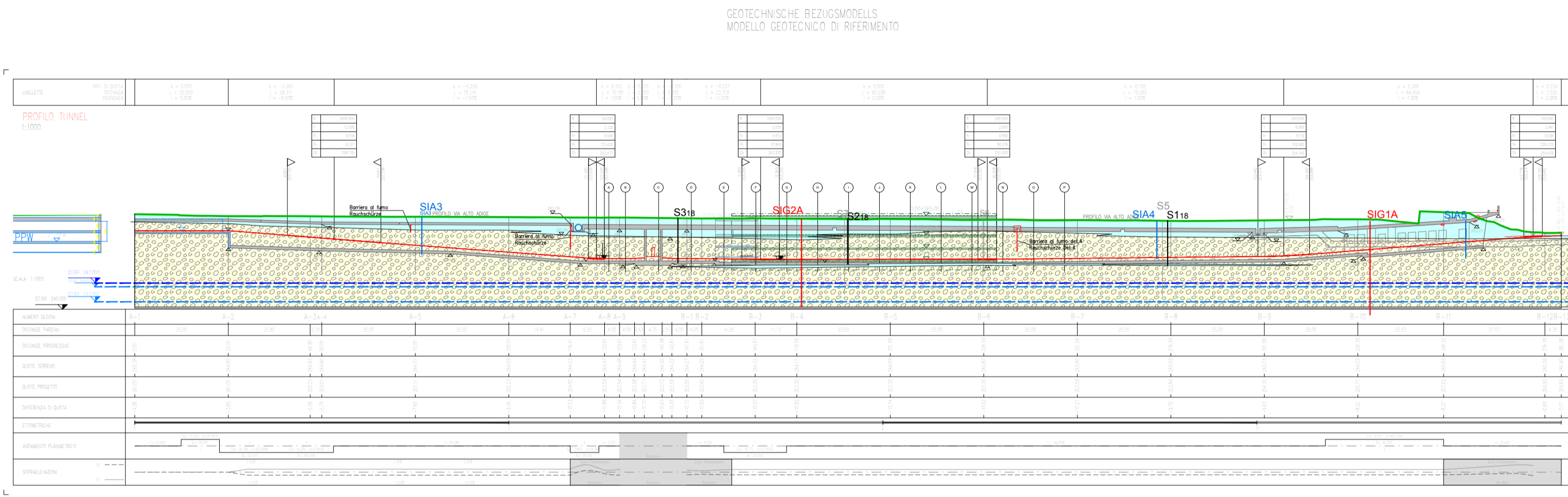
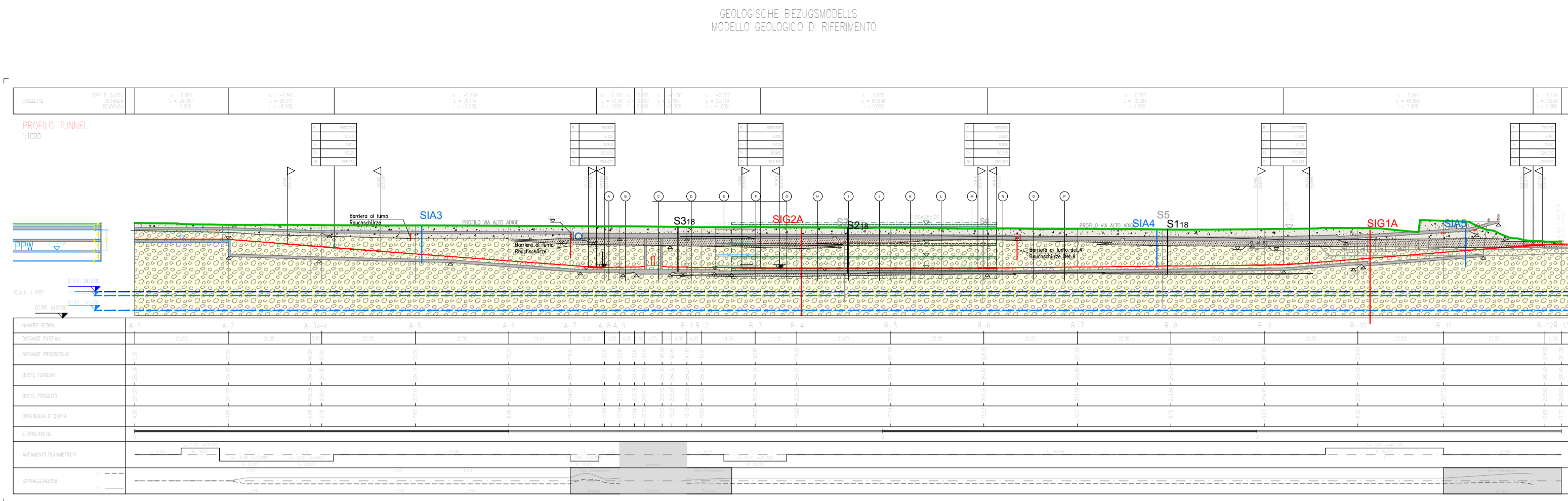
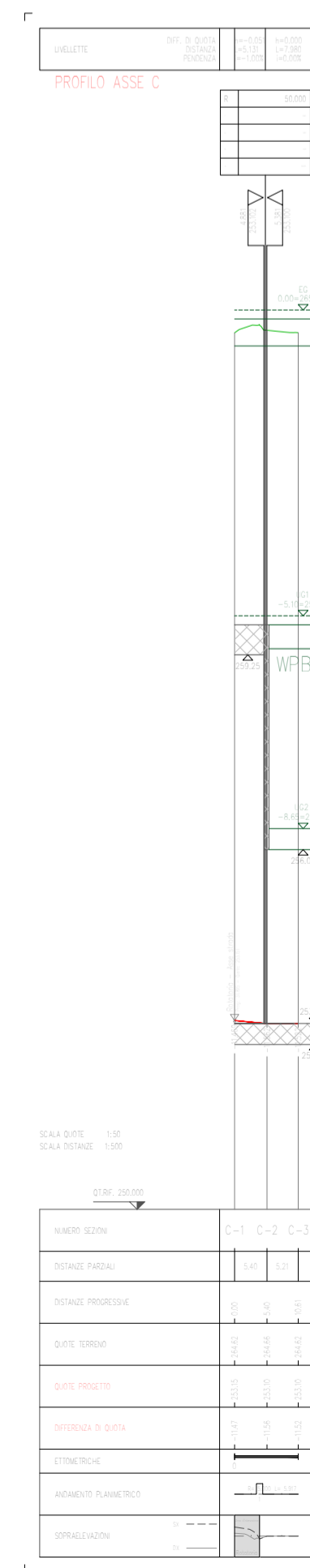
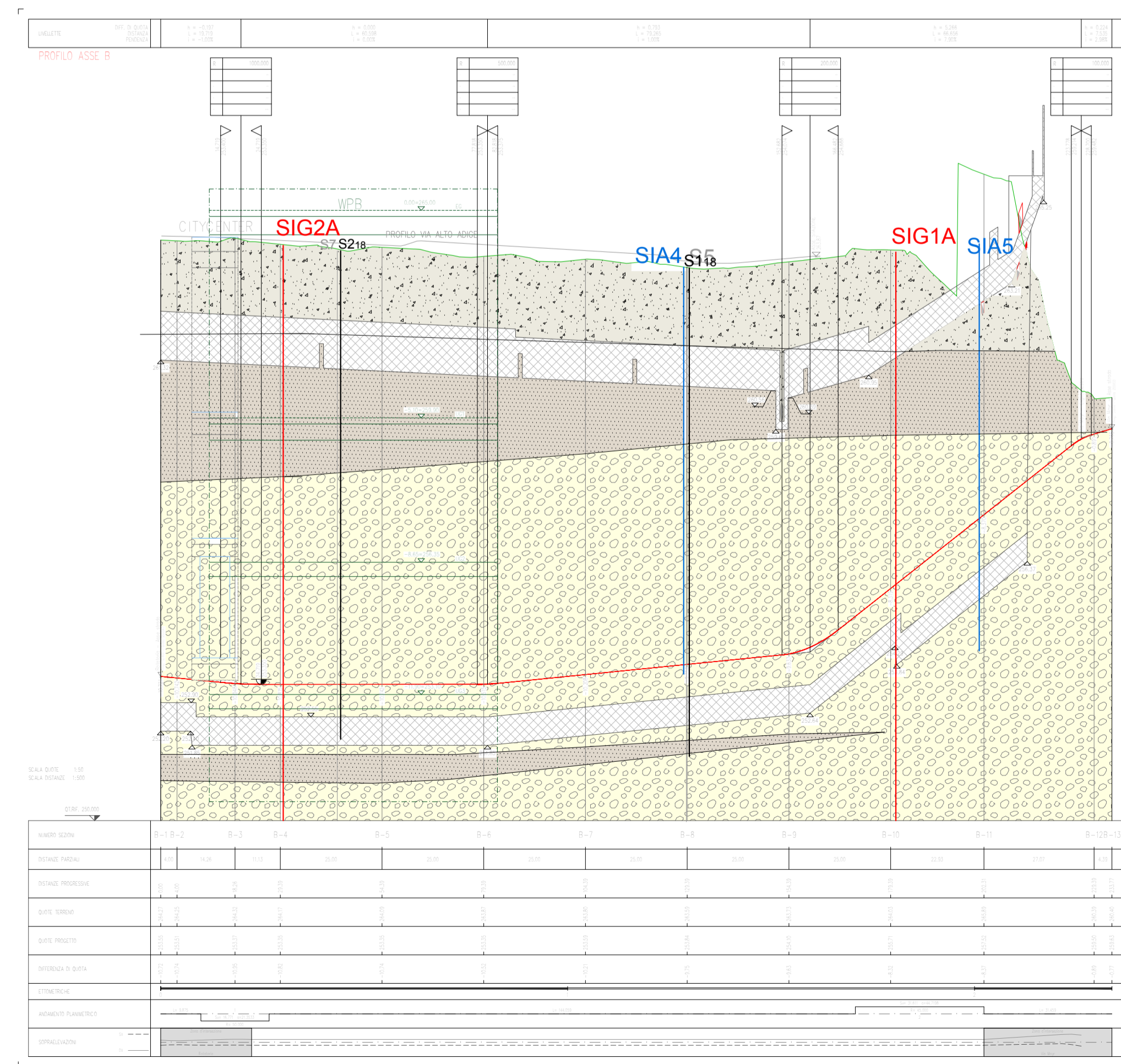
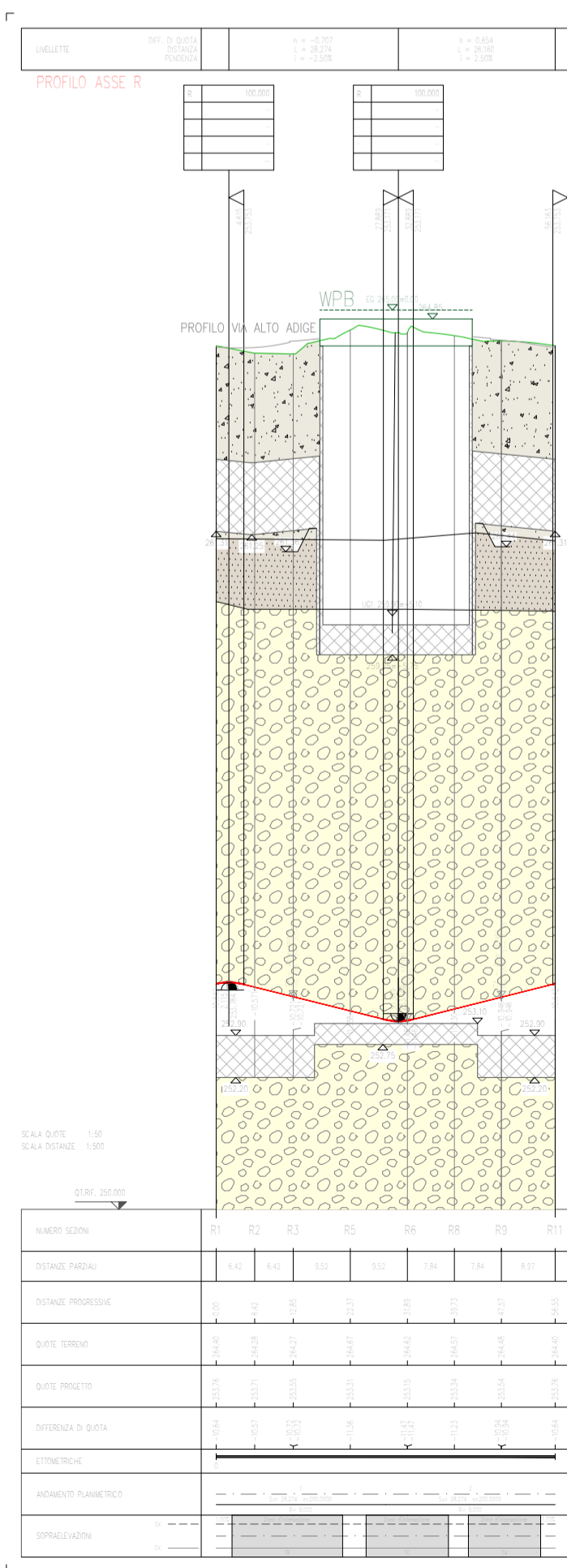
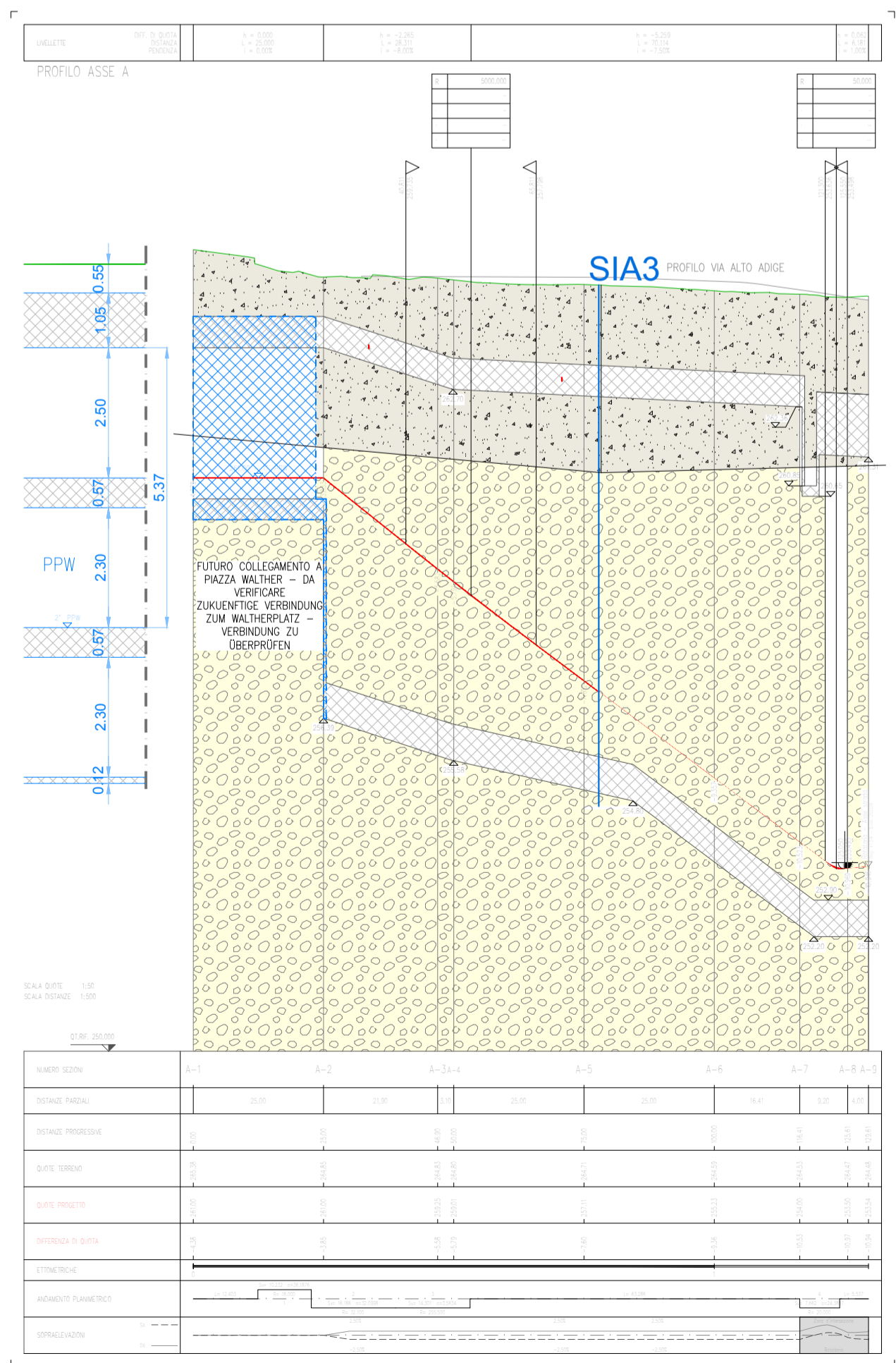


SCALA 1:1000



Autonome Provinz Bozen - Provincia Autonoma di Bolzano
Stadtgemeinde Bozen - Comune di Bolzano

STÄDTBAULICHER AUFWERTUNGSPLAN - ZONE PERATHONERSTRASSE - SÜDTIROLERSTRASSE
PIANO DI RIQUALIFICAZIONE URBANISTICA - ZONA VIA PERATHONER - ALTO ADIGE



WaltherPark

TUNNEL UND STRASSEN
TUNNEL DI ACCESSO E SISTEMAZIONI VIARIE

Proprietà
Eigentümer: Città di Bolzano - Stadt Bozen

Projektausführender
Soggetti Attuatori: WaltherPark s.p.a. | SIGNA

General Contractor
Projektmanagement: ICM Italia General Contractor Srl

Generalplaner
Projektista generale: DMA ITALIA srl

Planungsteam
Team di Progettazione: ATA Engineering, planpunkt, in.ge.na.

Stempel Gemeinde: _____

Planungsphase | Fase: **AUSFÜHRUNGSPROJEKT - PROGETTO ESECUTIVO**

Planinhalt | Descr. Tav.: Modello geologico di riferimento - Geologische Bezugsmodell

Planungskodierung | Cod.: -

Planart | Tipologia: Geologie / Geologia

Maßstab - Scala: 1:1.000-1:2.000 | Format | Formato: A1

Datum - Data: November/Novembre 2018 | Gez.: C. Pflferl

Plannummer - nr. Tav.: _____